

More Significant Thick High Grade Intersections At Magic

Highlights

- Highly prospective location with large resource potential
 - Significant intersections including:
 - 8.3 metres at 44.4 g/t Au from 167 metres
 - including 0.8 metres at 212.0 g/t Au
 - 4.2 metres at 42.6 g/t Au from 184metres
 - including 0.5 metres at 142.0 g/t Au
 - 6.0 metres at 19.1 g/t Au from 171 metres
 - 1.5 metres at 27.4 g/t Au from 164 metres
 - 4.0 metres at 8.6 g/t Au from 104 metres
 - 4.5 metres at 6.2 g/t Au from 225 metres
 - High grade intercepts located 100 metres west of current resource
 - Mineralisation remains open to the south and at depth
-

Silver Lake Resources Ltd ("Silver Lake") is pleased to announce assay results from ongoing exploration at its Mount Monger Operations (refer to figure 1).

Assay results (refer to table 1) have been received from an ongoing drilling programme at the Magic deposit located 3 kilometres south of the Daisy Milano mine.

Magic has a current resource of 1.1 million tonnes at 4.4 g/t Au for 152,800 ounces (refer to table 2).

The drilling programme intersected significant mineralisation outside of the current resource including 8.3 metres at 44.4 g/t Au and 4.2 metres at 42.6 g/t Au located approximately 100 metres west of the thick high grade mineralisation previously intersected at Magic (refer to figures 2 and 3).

Based on the latest drilling results it is currently interpreted that the mineralisation is stacked in multiple layers to the west that remain open to the south and at depth. Given the potential of Magic deposit, the company is undertaking an extensive exploration programme in the area to further delineate the resource. Further results will be announced as drilling progresses and assay results become available.

"We are very excited with the exploration results to date and the large resource potential of the Magic deposit and surrounding mineralisation in the immediate area" said Silver Lake's Managing Director Les Davis.

"We are optimistic of further positive results as the exploration programme continues. Our Mount Monger Operations are again proving to be highly prospective and well endowed with gold mineralisation" Mr Davis added.

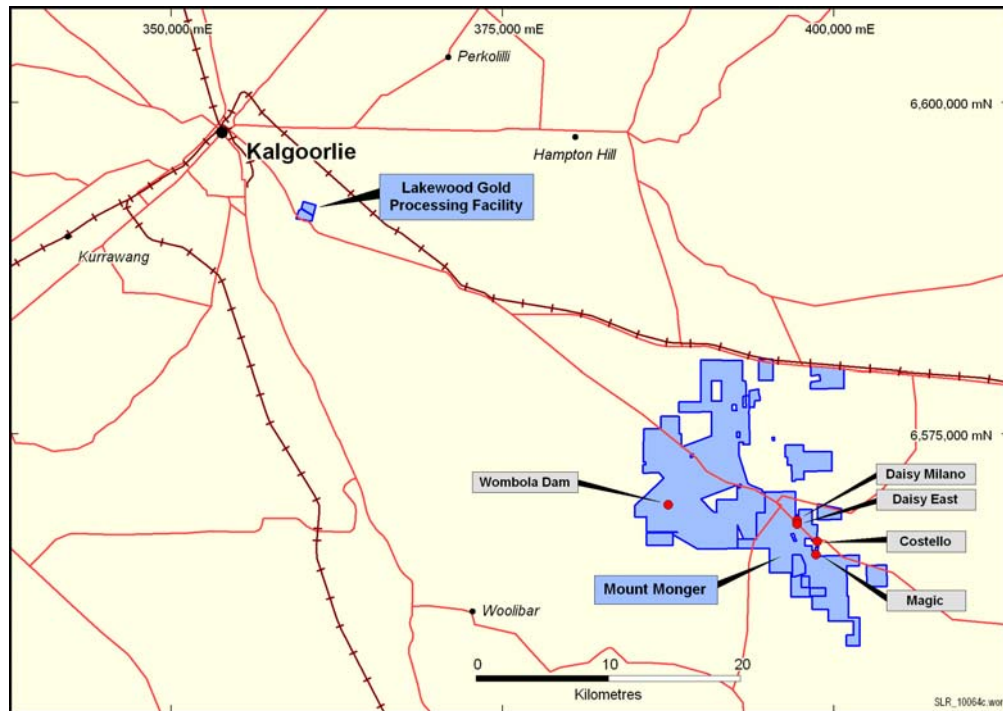


Figure 1: Mount Monger Operations location plan.

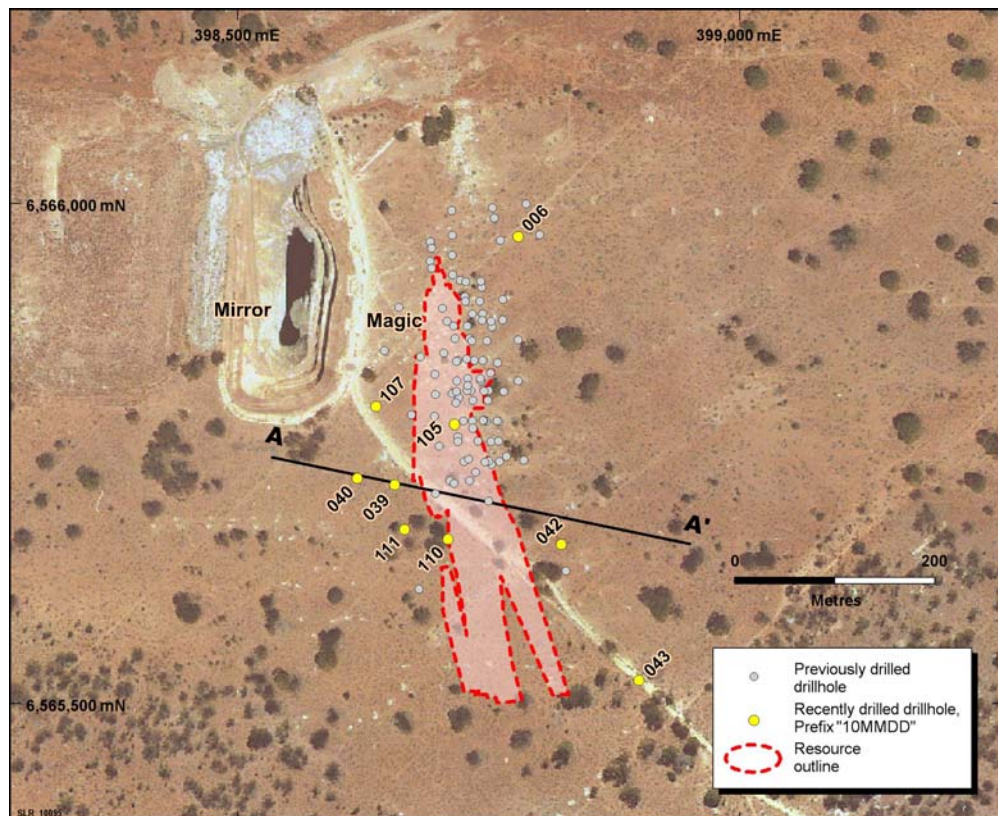


Figure 2: Drill collar location plan.

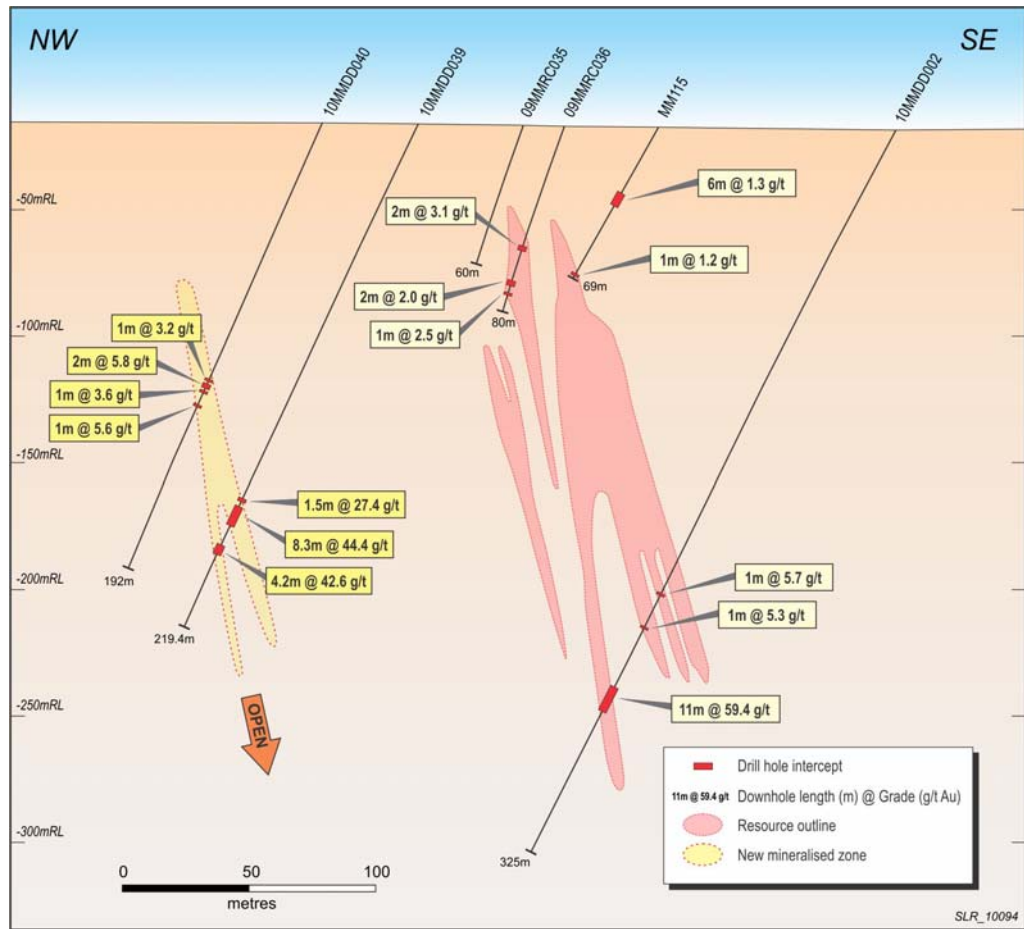


Figure 3: Oblique cross section at Magic showing recent and initial intercepts (recent intercepts are shown in yellow text boxes and are outside of the current resource).

Hole ID	Northing	Easting	From (m)	To (m)	Down hole Interval (m)	Grade g/t Au
10MMDD006	16636	10559	46.0	47.0	1.0	4.0
10MMDD039	16503	10309	136.0	137.0	1.0	2.2
10MMDD039	16512	10300	163.5	165.0	1.5	27.4
10MMDD039	16514	10298	167.0	175.3	8.3	44.4
	(including		169.4	170.2	0.8	212.0
10MMDD039	16518	10294	183.8	188.0	4.2	42.6
	(including		186.0	186.5	0.5	142.0
10MMDD040	16518	10288	111.0	112.0	1.0	3.2
10MMDD040	16518	10288	113.0	115.0	2.0	5.8
10MMDD040	16519	10287	115.9	116.9	1.0	3.6
10MMDD040	16521	10285	122.0	123.0	1.0	5.6
10MMDD042	16365	10440	85.0	86.0	1.0	5.8
10MMDD042	16391	10413	158.0	159.0	1.0	2.2
10MMDD042	16395	10408	169.5	171.0	1.5	3.1
10MMDD042	16396	10407	172.3	174.0	1.7	3.4
10MMDD042	16404	10398	198.0	199.7	1.7	4.9
10MMDD042	16412	10390	219.0	220.5	1.5	4.0
10MMDD042	16413	10389	222.5	223.5	1.0	2.9
10MMDD042	16414	10388	224.7	229.2	4.5	6.2
10MMDD043	16288	10357	328.0	332.0	4.0	3.4
10MMDD043	16292	10353	340.0	343.0	3.0	2.4
10MMDD043	16294	10351	344.0	347.0	3.0	2.0
10MMRC105	16523	10398	92.0	100.0	8.0	2.4
10MMRC107	16584	10327	127.0	128.0	1.0	7.1
10MMRC107	16584	10326	129.0	132.0	3.0	6.0
10MMRC107	16589	10321	144.0	147.0	3.0	3.3
10MMRC110	16413	10352	68.0	72.0	4.0	3.2
10MMRC110	16415	10350	76.0	80.0	4.0	2.3
10MMRC110	16423	10342	104.0	108.0	4.0	8.6
10MMRC111	16474	10281	171.0	177.0	6.0	19.1

Table 1: Drilling and assay results for Magic greater than 1 g/t Au.

For more information about Silver Lake and its projects please visit our web site at www.silverlakeresources.com.au.

For further information please contact

Les Davis
Managing Director
+61 8 6313 3800
contact@silverlakeresources.com.au

About Silver Lake Resources Ltd:

Silver Lake is an ASX 300 gold producing and exploration company with a resource base of 2.5 million oz in highly prospective regions including the Mount Monger goldfield and the Murchison (Tuckabianna, Comet, and Moyagee). Silver Lake's strategy is to develop large production centres at Mount Monger and at the Murchison with multiple mines at each centre.

Silver Lake's Mount Monger Operation contains the Daisy Milano and Daisy East underground mines located 50 km south east of Kalgoorlie.

Mount Monger has additional multi mine potential underpinned by emerging open pit production from Costello, Wombola Dam and Wombola Pit deposits. Furthermore the discoveries of Emma and the extension of the Rosemary lode show potential as near term production sources.

Gold ore from Mount Monger is transported to Silver Lake's 600,000 tpa Lakewood Gold Processing Facility located 5 km south east of Kalgoorlie and 45 km from the Daisy Milano mine.

In the Murchison ongoing exploration is focusing on extending current resources that have previously been constrained by limited drilling particularly below 100 metres depth. Our strategy is to delineate sufficient resources to sustain a 100,000 oz per annum operation.

Silver Lake's exploration programme is targeting¹ 5 million oz Au in resource.

Competent Person's Statement

The information in this report that relates to Exploration Results and Mineral Resources is based on information compiled by Mr Christopher Banasik who is a Member of the Australasian Institute of Mining and Metallurgy. Mr Banasik is a full time employee of Silver Lake Resources Ltd, and has sufficient experience which is relevant to the style of mineralisation under consideration to qualify as a Competent Person as defined in the 2004 edition of the JORC Code. Mr Banasik has given his consent to the inclusion in the report of the matters based on the information in the form and context in which it appears.

1: Information that relates to exploration targets refers to targets that are conceptual in nature, where there has been insufficient exploration to define a Mineral Resource and it is uncertain if further exploration will result in the determination of a Mineral Resource.

Notes to Table 1:

- Assay method is 40 gram fire assay.

Deposit	Measured Resources			Indicated Resources			Inferred Resources			Total Resources		
	Ore t '000s	Grade g/t Au	Total Oz Au '000s	Ore t '000s	Grade g/t Au	Total Oz Au '000s	Ore t '000s	Grade g/t Au	Total Oz Au '000s	Ore t '000s	Grade g/t Au	Total Oz Au '000s
Daisy Milano	70.3	24.7	55.8	457.1	23.1	339.5	227.0	31.3	228.4	754.4	25.7	623.7
Daisy East	33.0	48.1	51.0	53.6	44.9	77.4	27.9	15.7	14.1	114.6	38.7	142.6
Christmas Flat	-	-	-	152.8	3.0	14.7	238.6	3.6	27.6	391.4	3.4	42.4
Costello	-	-	-	115.0	3.3	12.2	128.2	3.1	12.8	243.2	3.2	25.0
Lorna Doone	-	-	-	-	-	-	111.0	4.0	14.3	111.0	4.0	14.3
Magic	-	-	-	283.8	4.4	39.7	807.2	4.4	113.2	1,091.0	4.4	152.8
Wombola Pit ¹	-	-	-	132.2	2.6	11.1	171.0	2.9	15.7	303.0	2.8	26.8
Wombola Dam ¹	-	-	-	125.1	2.6	10.3	432.0	3.1	43.2	557.2	3.0	53.5
Total Mount Monger	103.3	32.2	106.9	1,320.0	11.9	504.9	2,142.7	6.8	469.3	3,565.7	9.4	1,081.0
Caustons	-	-	-	625.6	3.9	78.2	462.2	3.3	48.9	1,087.8	3.6	127.1
Caustons South	-	-	-	424.8	2.0	27.6	296.5	4.2	39.6	721.3	2.9	67.2
Tuckabianna	-	-	-	1,224.0	2.2	86.6	938.0	2.1	63.3	2,162.0	2.2	149.9
Friars	-	-	-	-	-	-	402.0	1.9	24.6	402.0	1.9	24.6
Jasper Queen	-	-	-	-	-	-	175.0	2.6	14.6	175.0	2.6	14.6
Gilt Edge	-	-	-	63.0	3.0	6.0	33.0	5.2	5.5	96.0	3.8	11.6
Genesis	-	-	-	353.7	1.8	20.2	11.8	2.4	0.9	365.5	1.8	21.2
Exodus	-	-	-	457.4	1.6	23.7	101.3	2.8	9.0	558.7	1.8	32.6
Julies Reward	-	-	-	461.3	3.2	46.7	254.7	3.4	27.8	716.0	3.2	74.6
Sherwood	-	-	-	-	-	-	349.0	2.2	24.9	349.0	2.2	24.9
Jaffas Folly	-	-	-	6.0	4.3	0.8	202.0	1.4	9.1	208.0	1.5	9.9
Little John	-	-	-	-	-	-	1,201.0	1.8	69.5	1201.0	1.8	69.5
TMC/Katies	-	-	-	-	-	-	850.0	1.9	51.9	850.0	1.9	51.9
Total Tuckabianna	-	-	-	3,615.8	2.5	289.9	5,276.4	2.3	389.7	8,892.2	2.4	679.6
Comet	36.0	0.6	0.7	2,776.2	3.7	325.5	1,150.3	2.5	91.5	3,962.5	3.3	417.8
Moyagee	-	-	-	-	-	-	820.2	8.5	224.2	820.2	8.5	224.2
Total Murchison	36.0	0.6	0.7	6,392.0	3.0	615.5	7,247.0	3.0	705.4	13,675.0	3.0	1,321.6
Rothsay	-	-	-	-	-	-	591.2	7.0	132.9	591.2	7.0	132.9
Total Silver Lake	139.4	24.0	107.6	7,711.7	4.5	1,120.4	9,980.8	4.1	1,307.5	17,831.9	4.4	2,535.5

Table 2: June 2010 Resource Inventory

Rounding may give rise to unit discrepancies in this table